

DMP-2000

Measurement & Imaging Software

The screenshot displays the ZView DMP-2000 software interface. The central window shows a 3D model of a mechanical part with a crosshair tool overlaid. The interface is divided into several panels:

- DRO view:** Shows Cartesian coordinates: X = 0.1827, Y = -0.2372.
- Step view:** Shows step results for a feature, including Dist1, Dist2, and Dist3 values.
- Program view:** Lists the part program steps, such as Point, Line, and Dist measurements.
- Result view:** Shows a table of results with columns for Name, Type, and Actual values.
- Image view:** Shows a live or still image of the part being measured.
- Tool View:** Shows tool parameters for the Crosshair Tool, including Position (PX, PY, X, Y), PW, PH, H, OX, OY, Angle, Setting, Pause, Export, Edge, Display, and Color.
- Part view:** Shows CAD-like graphics of the part.

Annotations with arrows point to these features:

- Get instant results in DRO view.
- Show step results in Step view.
- List part program in Program view.
- Show Results in Result view.
- Show live or still image in Image view.
- Display status in Feature view.
- Setup tool parameters in Tool View.
- Show CAD-like graphics in Part view.

The DMP-2000 software is a PC-based field of view dimensional measurement & Imaging software that turns a conventional microscope into a powerful measurement system. The software uses the latest digital image processing technology to capture and analyze video images for dimensional measurement. It then compares the measurement to nominal values and tolerances to identify conditions of non-conformance. The DMP-2000 tolerance functions conform to ASME Y14.5M 1994.

The software is for Windows 7. It takes the advantage of the latest operating systems and provides you a familiar, graphical environment to complete your measurements. The software can be easily linked to other Windows applications, such as spreadsheets, SPC and best-fit packages.

The software is designed for image documentation, product inspection and quality control. The software provides a full range of functions for capture, measurement, archival, image comparison, image and result output. The software is easy to use and it will deliver reliable and repeatable precision measurement on the hardware of your choice.



ZView, Inc.
15640 Graham
Huntington Beach, CA 92649
Tel. (714) 892-7481
Fax. (714) 892-7451
E-Mail: info@zview.com
Web: <http://www.zview.com>

Main DMP-2000 Features

- Support FireWire, CameraLink, USB and other interface digital camera or frame grabber for live image display, measurement and annotation.
- Off-line or on-line Measurement. Stand alone or integrated into your applications.
- Advanced edge detection for sub-pixel accurate measurement.
- CAD import and export.
- Easy dimensional measurement with CAD-like graphics.
- Supports inch, millimeter, mil and micron units, Cartesian and Polar coordinates.
- Datum reference frame for alignment and tolerance.
- User-defined measurement calculations and functions.
- Up to 32000 points per feature.
- Save, open, run and edit part program capability.
- Group editing and custom report..
- Real-time linked to other applications, such as spreadsheets, SPC and best-fit.
- Flexible data format for post processing.
- Large size of color or monochrome image acquisition, archiving and retrieval.
- TWAIN support.
- Image comparison and processing.
- International language support.

Features and Functions

File

- New
- Open
- Save
- Save As
- Properties
- Run
- Run Step
- Run Repeat
- Import
- Set Origin
- Export
- Recent Files
- Exit

Auxiliary

- Comment
- Prompt
- Calibrate X
- Calibrate Y
- Set Calibration
- Camera
- In Port
- Out Port

Help

- Help
- About

Tool

- Find
- Teach
- Copy
- Test
- Update
- Edit
- Crosshair Tool
- Edge Tool
- Circle Tool
- Arc Tool
- Linewidth Tool
- Slot Tool
- Ellipse Tool
- Area Tool
- Focus Tool
- Cross Target
- Rectangle Target
- Circle Target

Output

- Format
- DDE Link
- Save Results
- Print Results
- Send Results
- Edge Points
- Result Buffers

Measure

- Edit
- Distance
- Circle
- Linewidth
- Angle
- Area
- Slot
- Ellipse
- Position
- Circularity
- Concentricity
- Straightness
- Angularity
- Parallelism
- Perpendicularity
- Size
- Statistics
- Create Result Buffer

View

- Zoom In
- Zoom Out
- Zoom Window
- Zoom All
- Zoom View
- Show Drawing Bar
- Show Annotation

Video

- Live Image
- Capture
- Open Image
- Open Collection
- Histogram
- Pixel
- Enlarge
- Maximize
- Reference
- Overlay
- Subtract
- Blink
- Compare
- Copy Image
- Save Image
- Save Collection
- Print Setup
- Print Preview
- Print

Setup

- System Setup
- Lock Tool X
- Lock Tool Y
- Calibration
- Change Password
- Restore Password

Construction

- Zero
- Frame/Skew
- Offset
- Project
- Mirror
- Rotate
- Parallel
- Intersect
- Bisect
- Perpendicular
- Create Variable
- Math

Feature

- Tool
- Relative Tool
- Point
- Line
- Arc
- Circle
- User Feature
- Gauge Ball
- Gauge Diameter

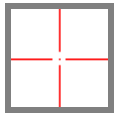
Edit

- Setup
- Modify
- Insert
- Delete
- Select All
- Remove Last
- Rename
- Print
- Cancel
- Duplication
- Set Break Point
- Clear Break Point

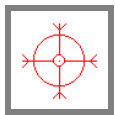
Annotation

- Color
- Line Width
- Define
- Text
- Line
- Arrow
- Circle
- Rectangle
- Ellipse
- Polygon
- Curve
- Ruler

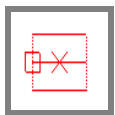
Image Tools



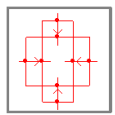
Crosshair Tool: Manual define a single point.



Circle Tool: Automatically find all points on a circle.



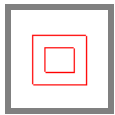
Linewidth Tool: Automatically find all points on two parallel edges.



Area Tool: Automatically find the area and centroid of an area.



Cross Target: Automatically find a cross pattern.



Circle Target: Automatically find a circle pattern.



Rectangle Target: Automatically find a rectangle pattern.

Results

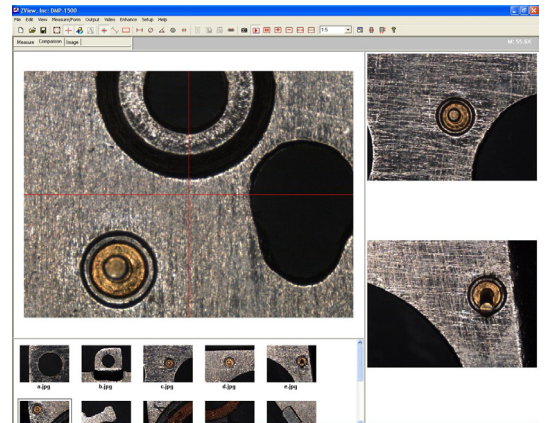
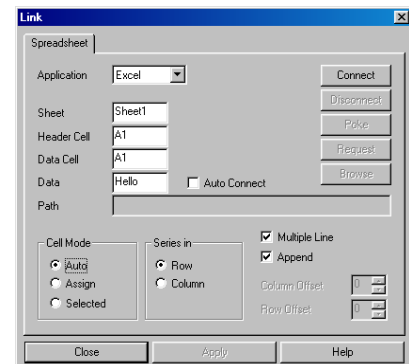


Image database and comparison



Seamless and real-time link to third party software.